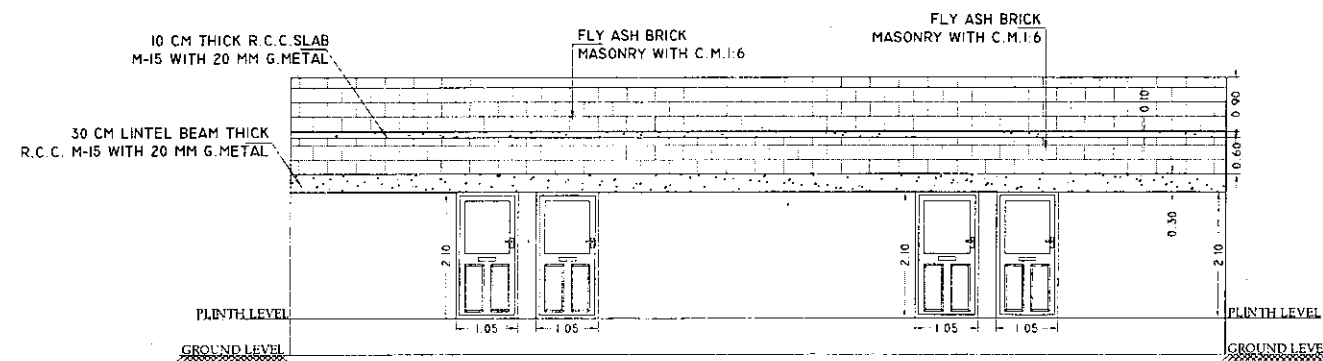
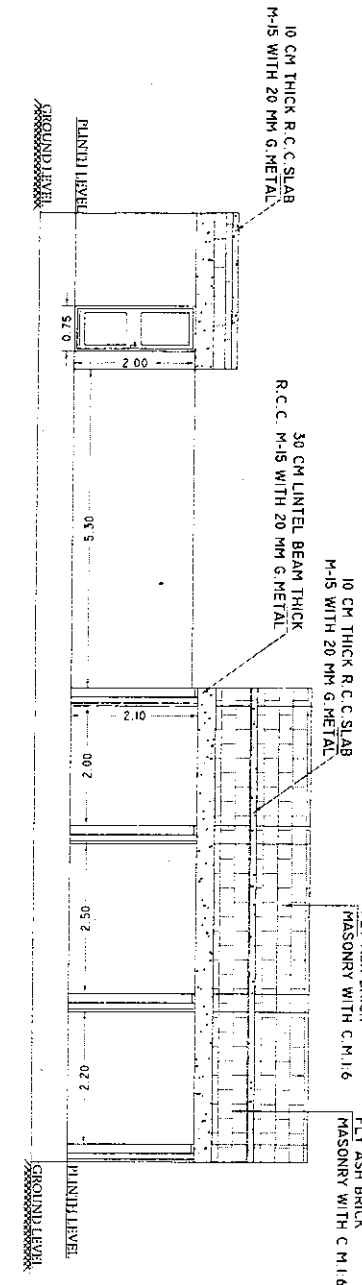


SECTIONAL ELEVATION AT A-A'

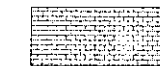


## I-1,2,3 & 4 TYPE QUARTER

### DETAILS

SR.NO.	DESCRIPTION	QTY
<b>D O O R</b>		
1.00	D1-1.05 M. X 2.10 M	8. NOS
2.00	D2-1.05 M. X 2.10 M	8. NOS
3.00	D3-0.75 M. X 2.00 M	2. NOS
<b>W I N D O W</b>		
4.00	W1- 0.90 M. X 1.15 M.	4. NOS

NOTE :-WALL THICKNESS 0.30 M (INCLUDING PLASTER ON BOTH SIDE OF WALL)



### PROPOSED WORK

GOVERNMENT OF CHHATTISGARH WATER RESOURCES DEPARTMENT WATER MANAGEMENT DIVISION NO.1, RAIPUR			
CONSTRUCTION OF RESIDENTIAL PREMISES & CONSTRUCTION OF OTHER BUILDINGS INCLUDING RENOVATION OF I-TYPE QUARTERS NEAR MARINE DRIVE BEHIND SOIL TESTING LAB OF WATER RESOURCES DEPARTMENT SHANTI NAGAR DISTRICT. RAIPUR			
DRAWING PLAN OF I TYPE BUILDING OF BASTAR SADAN BUILDING			
DRAWN BY  SUB ENGINEER	CHECKED BY  ASSISTANT ENGINEER (D) Mahanadi Circle, Raipur	CHECKED BY  EXECUTIVE ENGINEER (D) Mahanadi Circle, Raipur	CHECKED BY  SUPERINTENDING ENGINEER (D) Mahanadi Circle, Raipur
SUBMITTED BY  SUB DIVISIONAL OFFICER W.R. Sub. Div. No. 1, Raipur	CHECKED BY  ASSISTANT ENGINEER (D) Water Management Division No. 1, Raipur	CHECKED BY  EXECUTIVE ENGINEER (D) Water Management Division No. 1, Raipur	CHECKED BY  SUPERINTENDING ENGINEER (D) Water Management Division No. 1, Raipur
CHECKED BY  ASSISTANT ENGINEER (D) Water Management Division No. 1, Raipur	RECOMMENDED BY  EXECUTIVE ENGINEER Water Management Division No. 1, Raipur	RECOMMENDED BY  SUPERINTENDING ENGINEER Mahanadi Circle, Raipur	APPROVED BY  CHIEF ENGINEER Mahanadi Reservoir Project Raipur
DRAWING NO.			